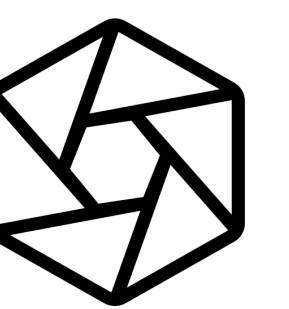


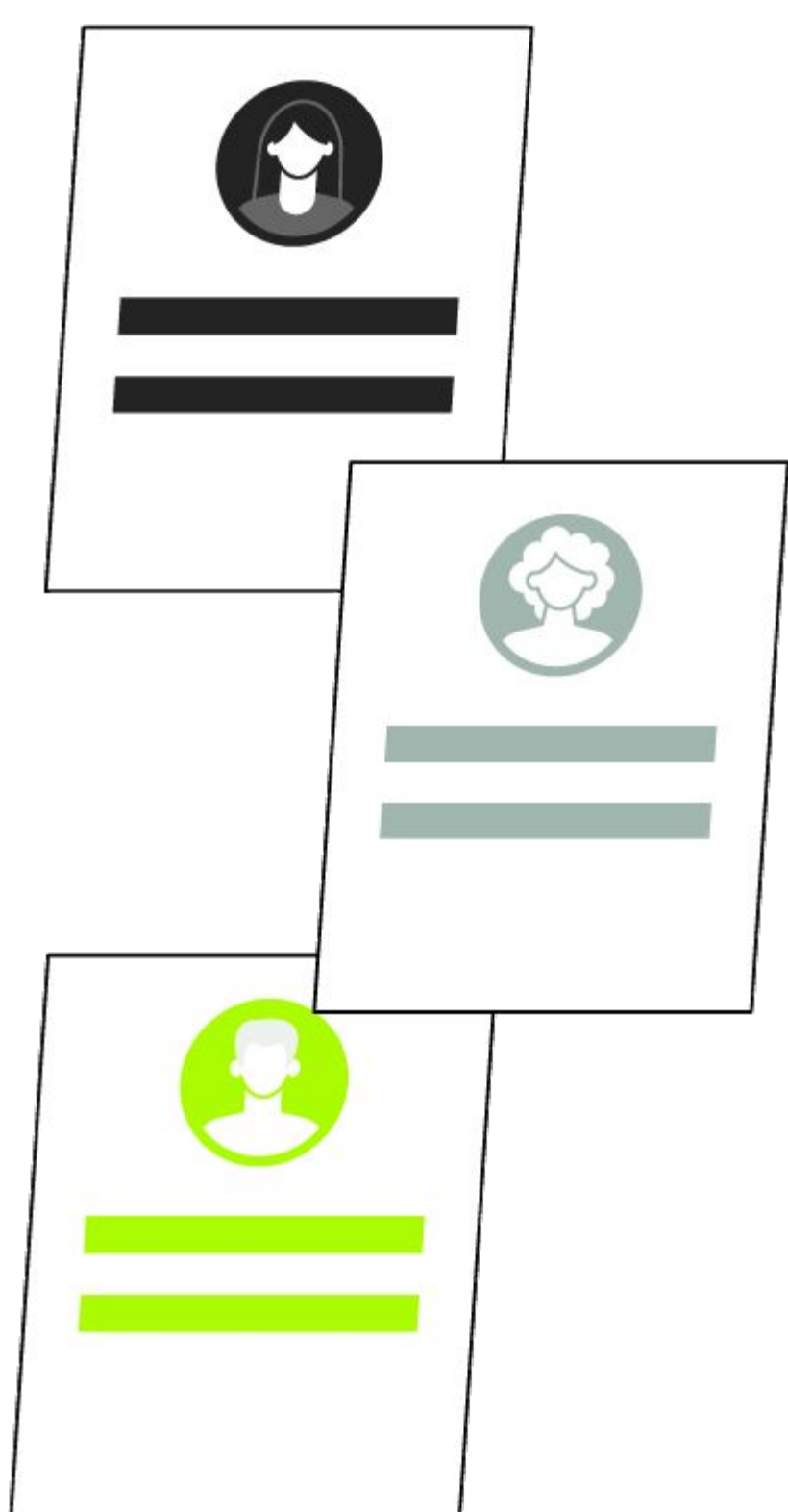
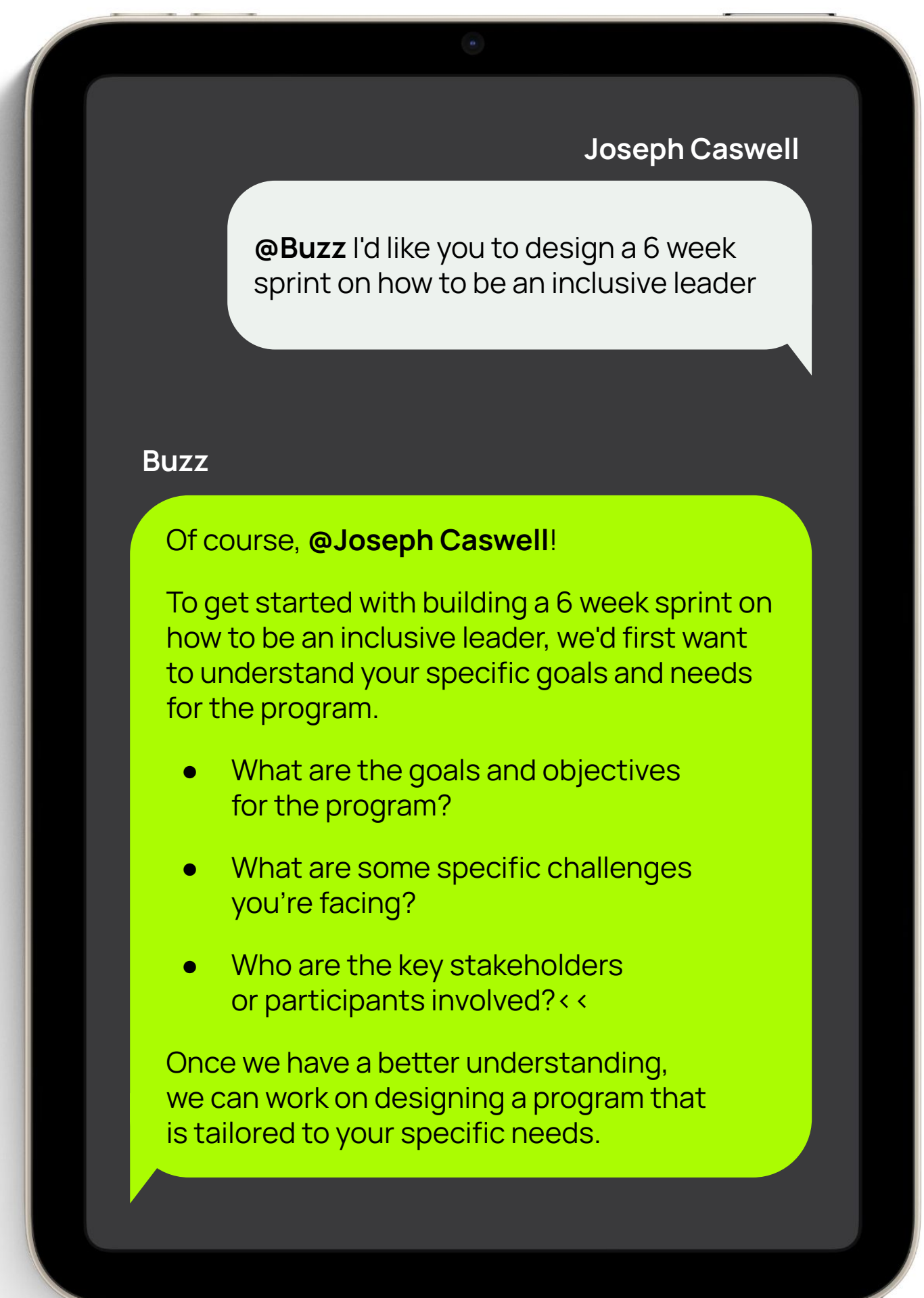
Hive Learning • Sprint Builder



With AI and automation reshaping the workplace, it's predicted that 40% of the workforce will need to be reskilled in the next three years. Upskilling and reskilling is no longer an option - it's a necessity.

However, as the demand to address this skills gap grows, many L&D professionals find themselves without a clear roadmap to meet this need effectively.

On average, it can take organizations up to six months to find the right vendor, plus an additional three months to tailor the program to learners and the business context. By the time the program is created, the content is out of date.



But what if we told you there's a faster, more effective way to empower your team with the skills they need?

At Hive Learning, with our AI-powered Sprint Builder, we can design and build a program in **4 hours or less!** This allows L&D teams to create learning programs that meet the rapidly evolving needs of today's workplace, all within budget constraints. It's a quicker, smarter way to learn.

So welcome to the future of learning - real-time, consistent, and accessible to everyone across your organization, regardless of their location, department, or role.

What is a Sprint and How Does Sprint Builder Work?

A Sprint is our approach to achieving action-driven learning, the kind that sparks change and sticks with you long after the conversation has ended, the book has been read, or the video has been watched.

We deliver bite-sized content for maximum engagement, filled with tools and activities that learners can immediately apply.

It can take up to 6 months to design and deliver a skills program to your team and with teams needing constant upskilling and re-skilling this is a huge task for the learning and development teams. Sprint Builder is a powerful tool that accelerates the program-building process from months to minutes, allowing you to design entire learning sprints in a few simple steps.

How does it work?

1. **Discover:** Identify the challenges you need to address with a needs analysis. Speak directly with Buzz, our AI assistant, to find the right learning plan for your team and business.
2. **Build:** Based on the needs analysis, Sprint Builder generates a tailored learning sprint.
3. **Review:** Take a moment to review the output and make any necessary adjustments. This human touch ensures the quality of our AI interactions.
4. **Deploy:** Once you're happy with the learning program, it's ready to be launched with your team.

With Sprint Builder, you're in control of the learning journey, ensuring a dynamic and effective learning experience for all.

What makes us unique?

Scale & Efficiency

- Save a minimum of **£80k** per 1000 employees on scaling skills initiatives that make a difference.
- Deploy learning to large numbers of people distributed across a substantial geographical region, without incurring excessive costs.

Speed

- Skills are changing faster than ever before, but the methods we're delivering upskilling and reskilling opportunities are not keeping up. Deploy learning in real-time, rather than people having to wait for a scheduled session.
- Design programs **10x** faster than traditional methods.

Consistency

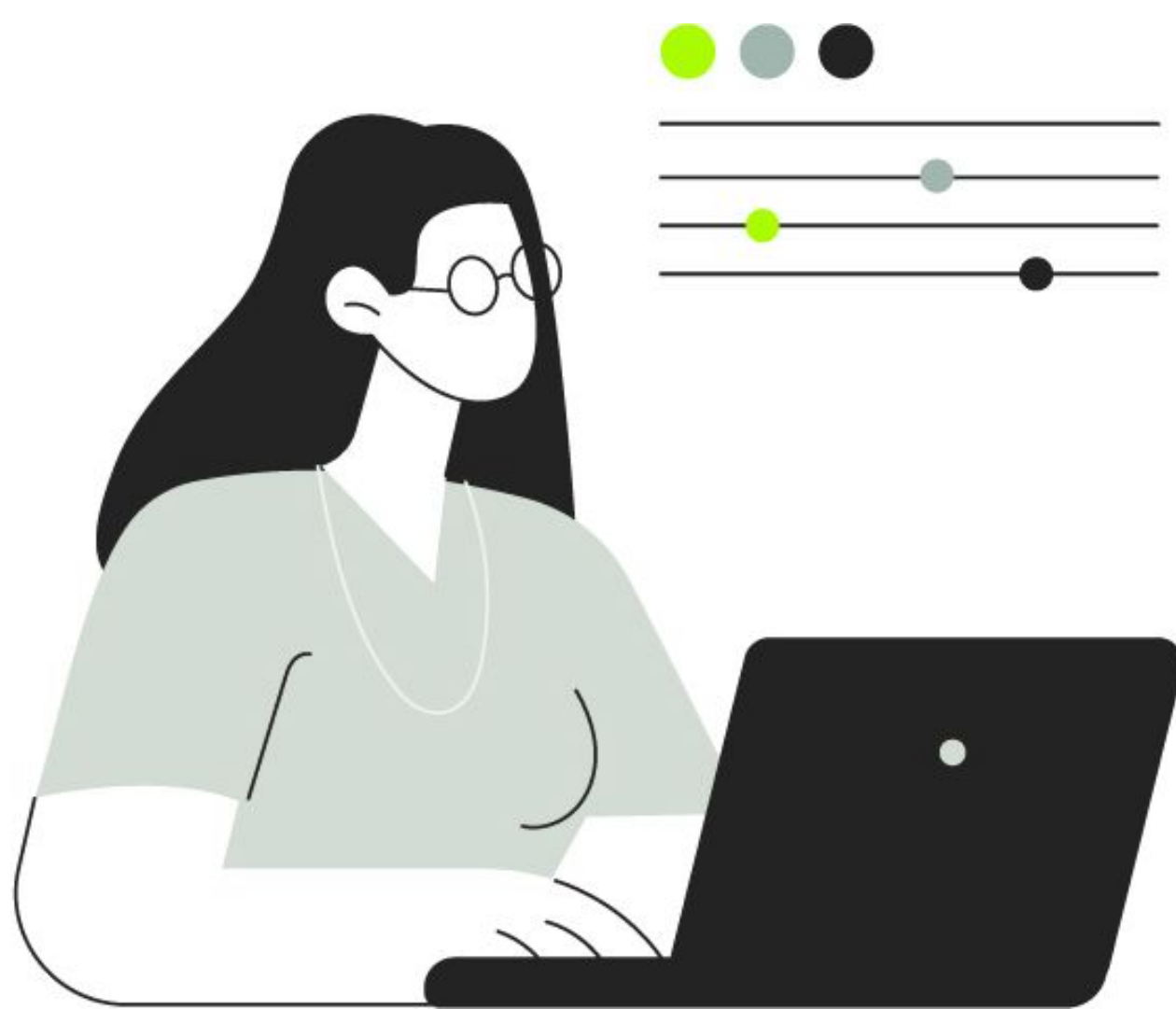
- Every individual in an organization will receive the same information, regardless of what department they work in or who manages them.
- Achieve **80%** consistency in learning content quality compared to subject matter expert design.

Innovative Discovery

- A learning manager can have an organic conversation with our AI Coach, Buzz, to determine their needs. The power to generate a learning sprint quickly, based on a discovery conversation, is a game-changer.

Contextualised Learning

- Using Hive's methodology, we turn your information into programmatic learning. By adding business-specific information into the process, we create programs that are highly contextualized to the business, to the team, and to the individuals.
- Achieve **100%** registration rates, **80%** monthly active engagement and a **104%** increase in productivity in the workplace.
- The learning programs will reflect your organization's unique tone of voice and culture, ensuring the learning experience feels inherently 'you'.



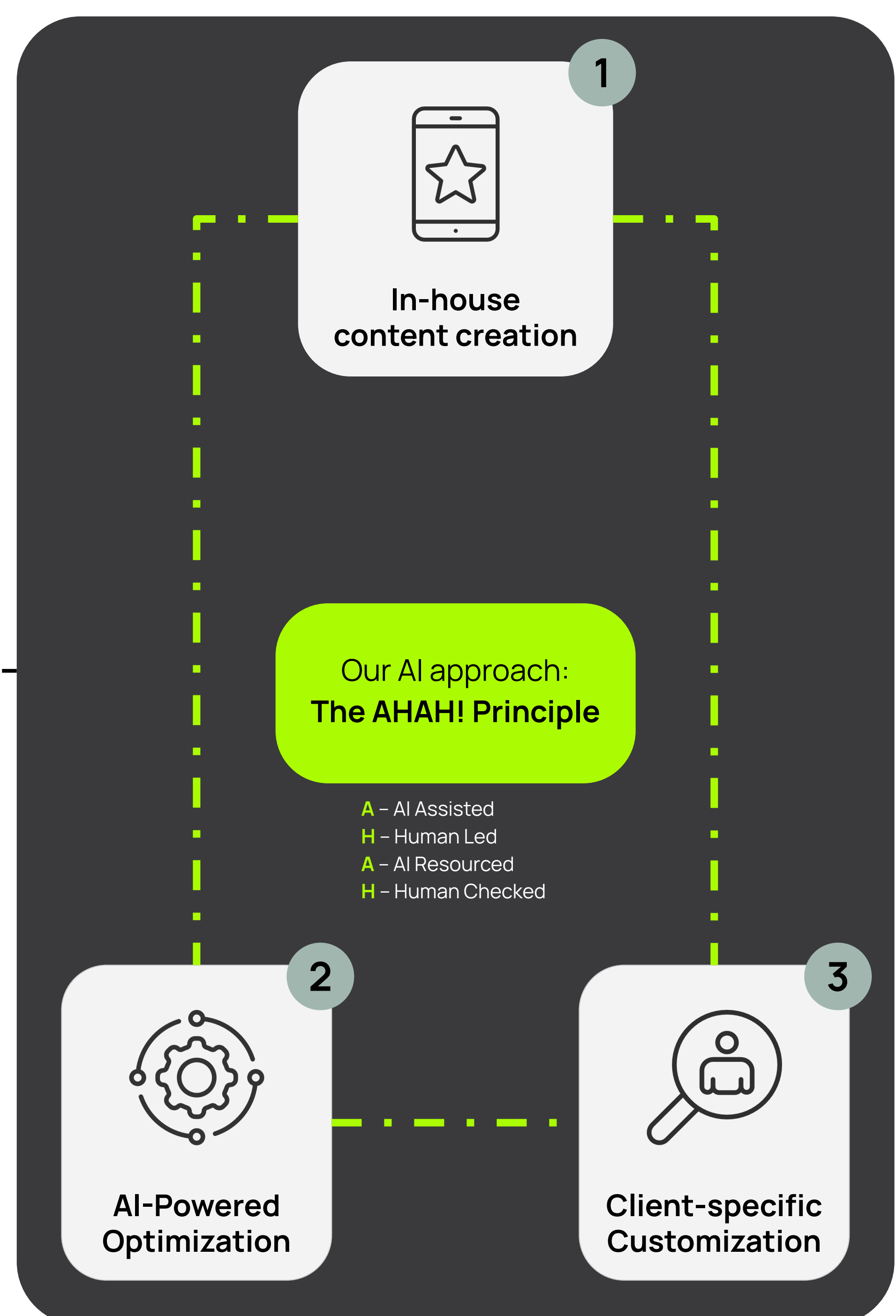
The AHAH principle - our methodology

Just as a conductor guides an orchestra to create harmonious music, Hive Learning uses the AHAH Principle to ensure our AI Sprint Builder is optimally in harmony with human expertise. The AHAH Principle, which stands for AI-assisted, Human-led, AI-resourced, Human-checked, highlights the fact that while AI is a powerful tool that can greatly enhance learning and development, it doesn't replace the human touch.

Let's break down the AHAH Principle

- **AI-Assisted** - We utilize Gen AI to expedite processes and boost agility. Its role is to augment human intelligence, not replace it.
- **Human-Led** - The authentic 'Aha!' moments that make learning truly impactful require human leadership.
- **AI-Resourced** - AI provides a vast toolkit that we've never had access to before. We harness its power in a way that aligns with our values.
- **Human-Checked** - While AI is a powerful assistant, humans have the final say. This human check ensures quality in all our AI interactions.

Our application of the AHAH Principle marries the speed and efficiency of our AI-powered Sprint Builder with human creativity and inspiration, creating a WOW factor for learners at scale. This principle is not just a methodology; it aligns with our core values, emphasizing that technology should complement, not replace, human capabilities and expertise.



How are Partners Currently Testing Sprint Builder?

One of our partners, Ashwini K Jagdale, Head of Learning & Organizational Development at Blenheim Chalcot, has been using Sprint Builder to create onboarding content based on live events. They feed Buzz with transcripts from previous training sessions, transforming them into engaging learning resources. Here's what Ashwini had to say about her experience:

"I recently used Hive Learning's Sprint Builder to create a session on Rational Emotive Behavioral Therapy (REBT), and I was blown away by the efficiency and effectiveness of this tool. With just a few keywords, it generated content quickly and accurately, saving me time and ensuring top-quality materials for our employees."

Our experience with Hive Learning's Sprint Builder has been a game-changer. It has not only streamlined our content creation process but has also enhanced the learning experience for our employees. I can confidently say that this tool has become an invaluable asset in our training and development initiatives."

Here are a few examples of how other businesses have been utilizing Sprint Builder in their testing process.

- **Employee Onboarding:** Onboarding content is created using live events. Buzz is fed with transcripts from previous training sessions and transforms them into engaging learning resources.
- **Client Education programs:** Sprint Builder is being used to streamline and enhance the onboarding process for several of our clients, ensuring a smooth and impressive start to the customer journey.
- **Digitizing Policies and Procedures:** Our partners are using Sprint Builder to digitize HR policies and incorporate skill-based learning elements, adding a dynamic and interactive twist to traditional policy resources.
- **Upskilling for Customer Service Divisions:** Sprint Builder is a valuable tool for upskilling team members in customer service divisions, equipping them with the knowledge and skills to excel in their roles.

These exciting use cases are just the beginning.

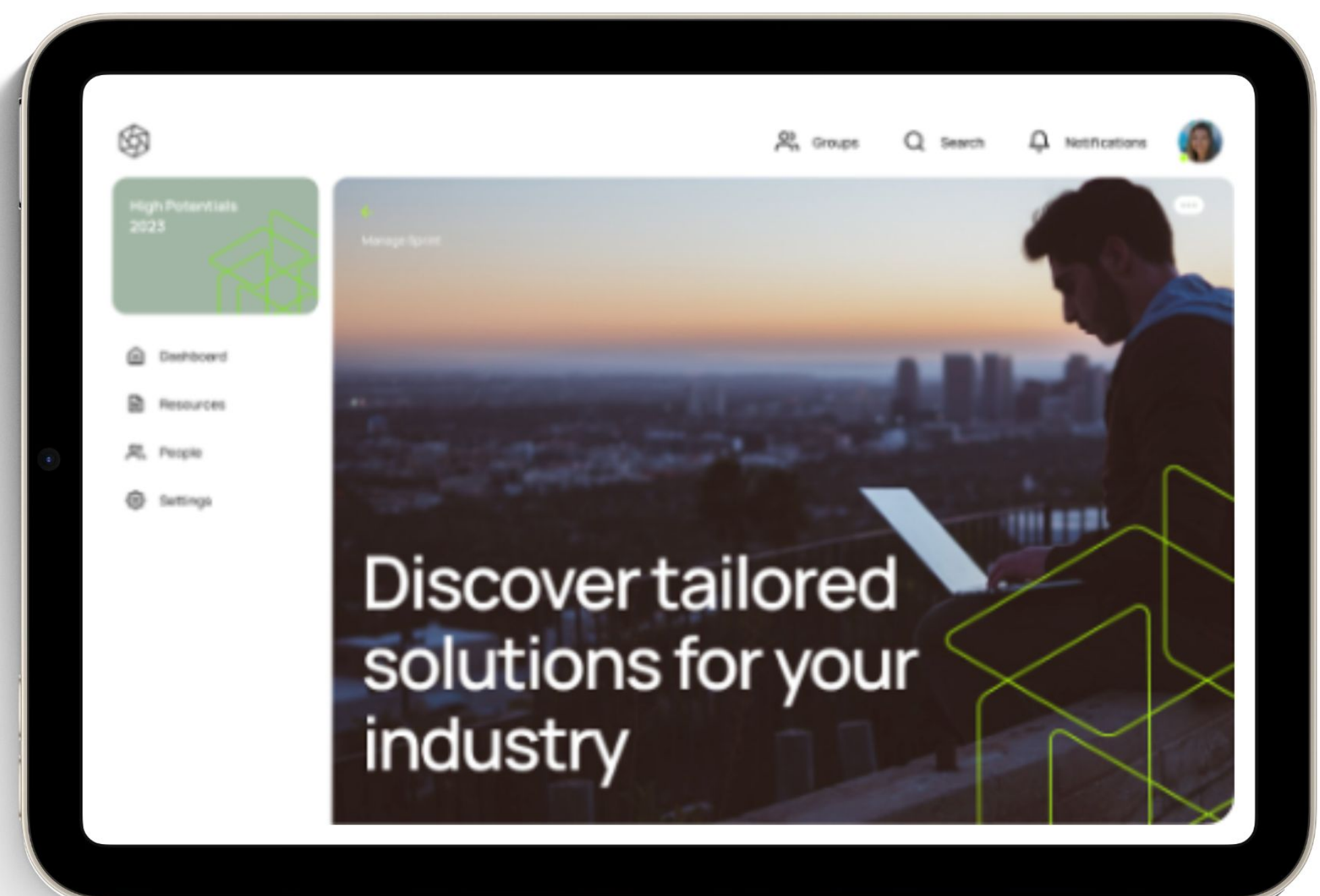
As Sprint Builder continues to iterate and improve based on customer feedback, we anticipate even more innovative applications of this powerful tool.

What next?

At Hive Learning, we're committed to continuous innovation! We're actively testing and refining our Sprint Builder Functionality while exploring more opportunities to streamline Sprint creation with our AI assistant, Buzz.

So, are you ready to dive into the future of learning?

[We'd love to hear from you!](#)



Hive Learning

We're excited to chat about how our solutions can empower your learning journey. **Let's shape the future of learning together!**

[Find out more](#)